

ANIMAL FEED SUPPLEMENT

FOR FARM ANIMALS
FEEDING RECOMMENDATIONS



HEMPORAMA®

RS SUCCESS AGRO

RS SUCCESS AGRO is the world's first and only global biotechnological industrial agro-complex, created through the investments and innovative technologies of Industrial Innovation Group, the global leader in intellectual and technological solutions.



ANIMAL FEED SUPPLEMENT HEMPORAMA

are recommended for cattle, dairy cows, sheep, goats, horses, pigs, rabbits, ducks and chickens.

Hemp seed cake is a product obtained by squeezing oil from hemp seeds, after they are cleaned, ground and treated with heat and moisture.





HEMPORAMA®

Translated from the Uzbek language



State Scientific Center
for Control of Quality and Circulation
of Veterinary Medicines and Feed Additives
under the State Veterinary Committee
of the Republic of Uzbekistan

REGISTRATION CERTIFICATE № 001395

Issued to «RS SUCCESS AGRO» JV LLC

(name of the business entity)

Republic of Uzbekistan

to certify

that, in accordance with the Regulations on the Procedure for the Registration and Issuance of a Registration Certificate for Domestic and Imported Veterinary Medicines and Feed Additives:

100% hemp seed cake

(name of the veterinary medicine or feed additive)

Republic of Uzbekistan, «RS SUCCESS AGRO» JV LLC

(manufacturer's name)

in the form of granules

intended for supplementing
livestock and poultry feed

№ 001395-22 was entered in the registry

2022 «22»
November

for a term of 5 years.

This registration certificate is not an obligation to purchase a veterinary medicine or a feed additive, nor is it a quality certificate.

Director

S. Okkiev

stamp

signature

Full name of the manager



Falsification of a license is punishable by law.

**ПРИКОРМ
И
ЛАКОМСТВА**



ДЛЯ СЕЛЬСКОХОЗЯЙСТВЕННЫХ ЖИВОТНЫХ

100% ЖМЫХ СЕМЯН КОНОПЛИ



100% KANOP URUG'I, KUNJARASI

qishloq xo'jaligi hayvonlari uchun

TANSIQ TAOM

**&
QO'SHIMCHA OZUQA**



FROM SEED TO ANIMAL FEED



HEMP CULTIVATION

Industrial hemp for animal feed supplement Hemporama is grown in ecologically friendly environment.



SEED HARVESTING

Special equipment harvest hemp seeds for further cleaning and grading.



OIL EXTRACTION

Cleaned seeds are cold-pressed to extract the hemp oil.



HEMP SEED CAKE GRANULATION

Hemp seed cake obtained after oil extraction is further cooled and granulated.



LAB ANALYSIS

Hemp seed cake granules are tested in the laboratory for compliance with veterinary and sanitary standards.



HEMPORAMA CONTROL

Read the QR code on the package to the complete information on the production process.



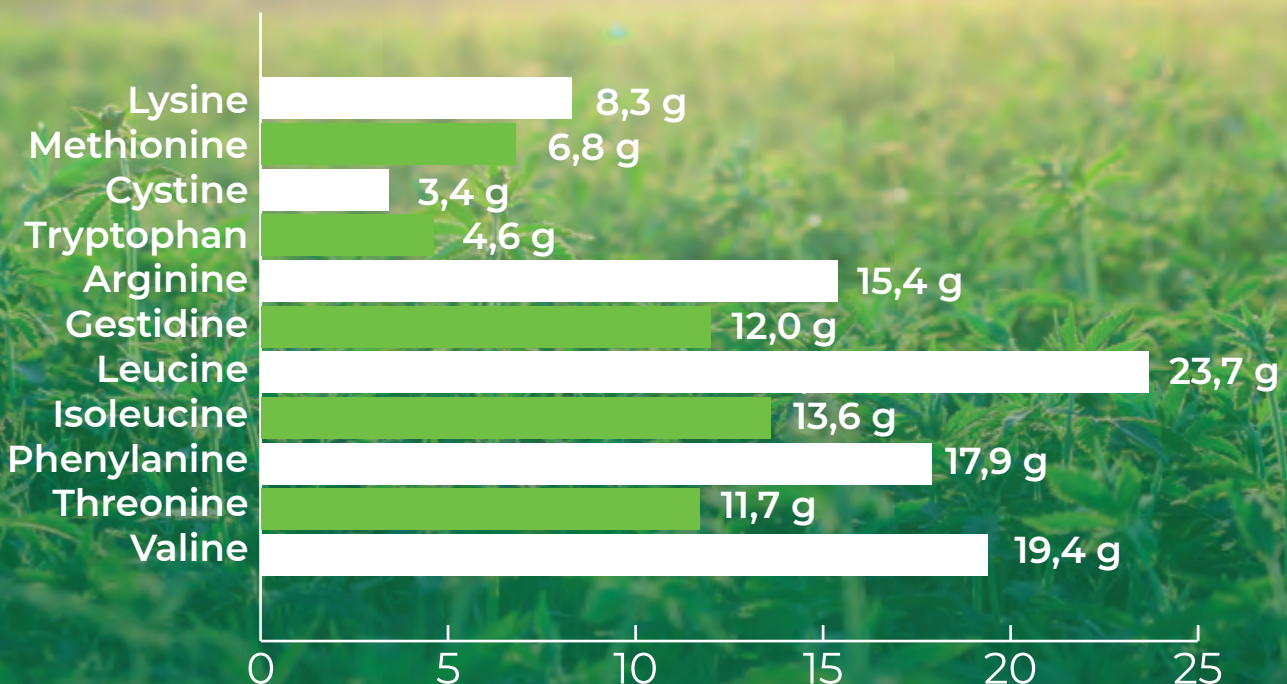
HEMP SEED CAKE:

- has an antioxidant effect
- supports the formation of healthy intestinal biocenosis
- prevents the growth of pathogenic bacteria
- supports the intestinal microflora
- prevents metabolic disorders
- enhances rumen fermentation
- stimulates the microorganisms of intestinal cavity to produce vitamins
- provides high fodder digestibility
- has a mild stimulating effect on intestinal peristalsis
- pH level control
- strengthens overall resistance, bones and joints
- enhances blood flow and reproductive functions
- enhances immunity and prolongs life

Fodder	Energy unit	Metabolic energy, cattle, MJ	Digestible protein, g	Proteins	Fat	Cellulose	Nitrogen-free extractive substances	Ash
Hemp seed cake	0,96	9,58	228	30,4%	10,2%	23,4%	17,9%	7,7%

CONTENT OF AMINO ACIDS IN 1 kg OF HEMP SEED CAKE, g

Hemp seed cake





CATTLE AND DAIRY COWS

Hemp seed cake is fed to cattle during fattening period — 2-2.5 kg per day, and to dairy cows — 1-2.5 kg per day.

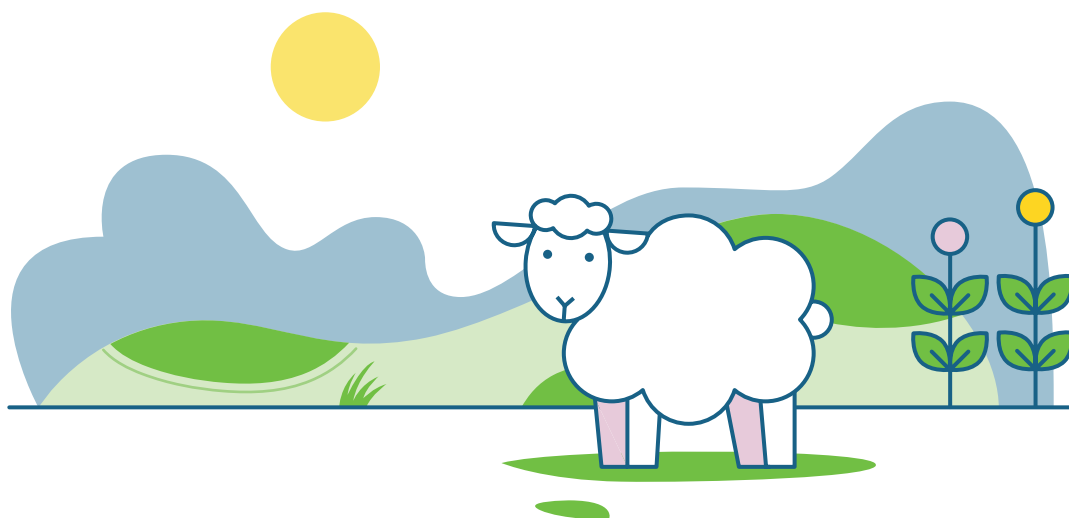
MAXIMUM DAILY DOSES OF HEMP SEED CAKE FOR DAIRY COWS WITH A LIVE WEIGHT OF ABOUT 550 KG

Fodder	For sale of whole milk	For processing into butter	For cheese making
Hemp seed cake	2,5 kg	1,0 kg	1,0-1,5 kg

DIGESTIBILITY COEFFICIENT FOR CATTLE, %

Fodder	Proteins	Fat	Cellulose	Nitrogen-free extractive substances
Hemp seed cake	78%	87%	20%	57%





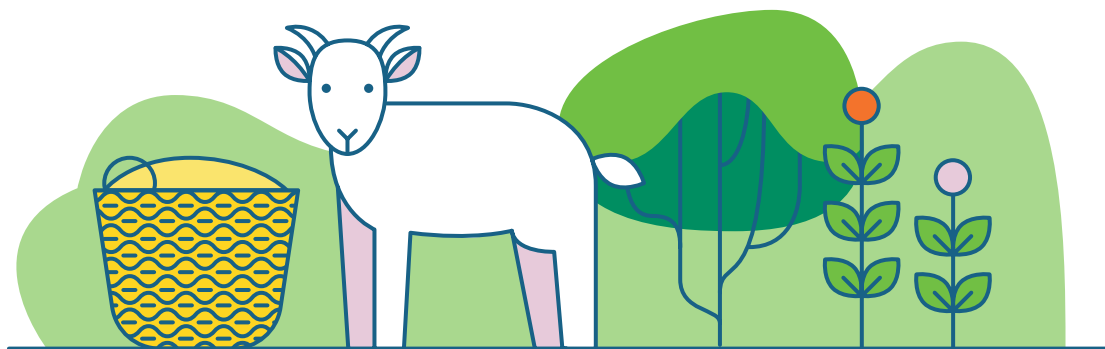
SHEEP

Hemp seed cake is fed to lactating females up to 0.6 kg per day for one head, as well as to young animals in finely crushed form. Finely crushed hemp seed cake can be included in the lamb feed from the age of one month.

The best food for lambs is a mixture of oatmeal and hemp seed cake (approximately 20 g). The average daily dose of hemp seed cake for a sheep is 7% of overall fodder to ensure the normal body functioning and the rapid growth of wool.

AVERAGE NUTRITIONAL VALUE OF HEMP SEED CAKE FOR SHEEP

Fodder	In 1 kg of fodder	
	Energy units	Digestible protein
Hemp seed cake	0,7 kg	0,22 kg

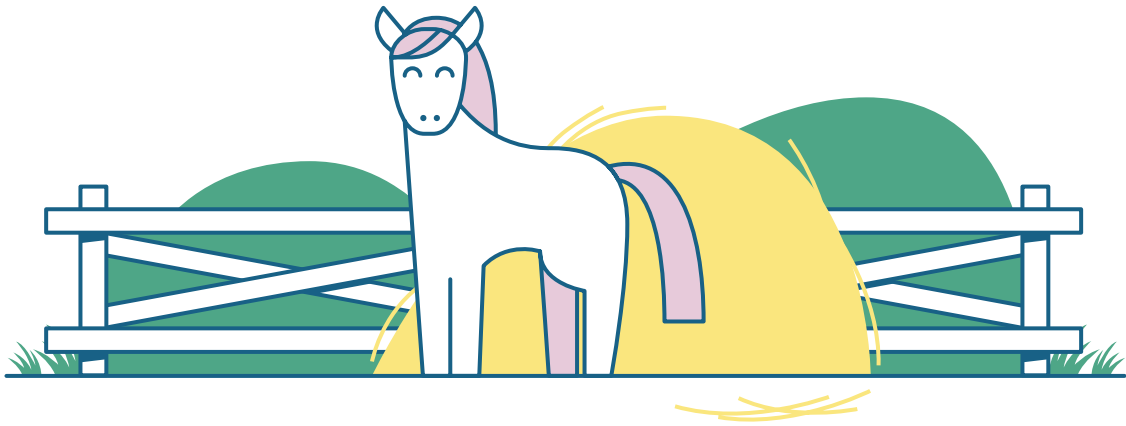


GOATS

Per day, an adult animal is fed up to 0.8 kg of crushed hemp seed cake, and goatlings — up to 0.4 kg as part of the feed mixture. From the age of 2-3 weeks, you can accustom young goats to the feed mixture.

The best concentrated fodder for them is a mixture of oatmeal and hemp seed cake. Adding hemp seed cake to the diet of lactating goats, you will increase their milk productivity, as well as the mass fraction of fat and protein in milk.





HORSES

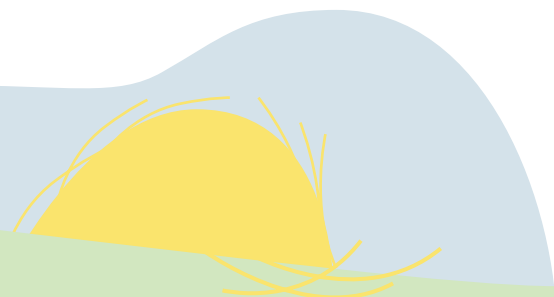
Fresh, crushed or slightly saturated hemp seed cake can be thoroughly mixed with coarse and succulent fodder. Optimal daily dosage: 0.5-2.5 kg per head.

Suitable for all ages and types: foal or senior horse, pleasure, working or sport horse.

Feeding hemp seed cake can be started at 200 g per day for healthy horses who need a little extra grooming and care.

MAXIMUM DAILY DOSES OF HEMP SEED CAKE FOR HORSES WITH A LIVE WEIGHT OF ABOUT 500-550 kg

Fodder	Not working	Working
Hemp seed cake	1,5 kg	2,5 kg





PIGS

Growing pigs should be fed up to 300 g of hemp seed cake per day, and pregnant / lactating females — up to 600 g. Males are fed up to 1-1.5 kg.

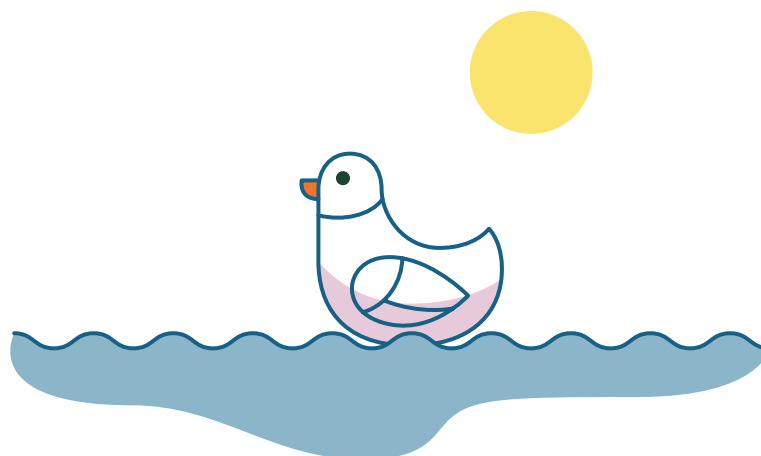
Due to hemp seed cake in the pigs' diet, the slaughter yield increases by 3.5%.

HEMP SEED CAKE DIGESTIBILITY COEFFICIENT FOR ADULT PIGS, %

Fodder	Organic substance	Protein	Fat	Cellulose	Nitrogen-free extractive substances
Hemp seed cake	55%	88%	92%	20%	41%

MAXIMUM DOSES OF HEMP SEED CAKE IN MIXED FODDER FOR PIGS, %

Fodder	Idle and pregnant females of 1 period	Young pigs of 4-8 months	Semi-lard fattening	Lard fattening	Boars
Hemp seed cake	5%	5%	5%	5%	5%



DUCKS

Before feeding, the hemp seed cake must be crushed and then ground into coarse flour. Hemp seed cake can be included in the ducklings' diet from the age of 2-3 days, no more than 2% by the overall weight of grain-meal mixture.

For ducklings older than 7 days — no more than 7%.

Adding hemp seed cake to the ducks' diet will make their feathers more shiny and their eggs more nutritious. Bagasse should not be given in large quantities to avoid fatty liver and other consequences of overfeeding.

DAILY DOSE FOR LAYING DUCKS, PER HEAD

Fodder	Egg laying in 1 month, pcs				
	0-3	12	15	18	21
Hemp seed cake	2,4 g	9,4 g	12 g	13,5 g	16,2 g

DAILY DOSE FOR MEAT DUCKLINGS, PER HEAD

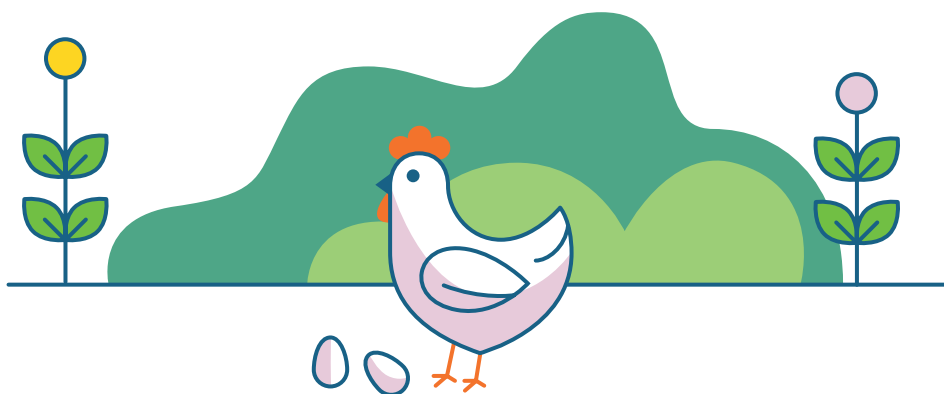
Fodder	Age, in days				
	1-10	11-20	21-30	31-50	51-60
Hemp seed cake	1 g	3 g	8 g	15 g	20 g

How does hemp fit into the market of animal feeds

<https://vc.ru/flood/400300-kak-konoplya-vpisyvaetsya-v-rynok-kormov-dlya-zhivotnyh>

Thailand: farmers begin selling organic chicken raised on hemp feed

<https://olkpeace.org/news8083.html>



CHICKENS

The daily dose for chickens is up to 10 g of hemp seed cake per head. The daily dose for laying hens at 6-7 weeks is 0.5 g, at 20-45 weeks — 6 g. Addition of hemp seed cake increases protein levels and is also helpful for molt.

Fodder of young animals should not contain more than 5% of hemp seed cake.

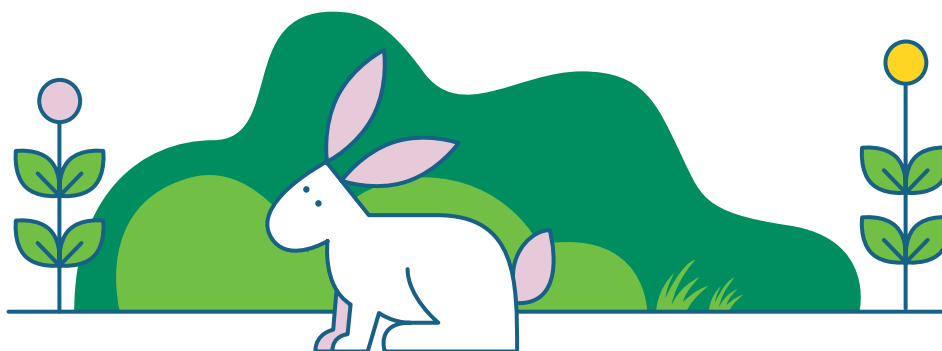
In winter, the proportion of hemp seed cake should be increased, it is also necessary to carefully monitor the moisture content of fodder.

DAILY DOSE OF HEMP SEED CAKE FOR LAYING HENS ACCORDING TO SEASONS, g PER HEAD

Fodder	Winter	Spring	Summer	Autumn
Hemp seed cake	12 g	11 g	10 g	11 g

DAILY DOSE FOR YOUNG CHICKENS, g PER HEAD

Fodder	Age, in days						
	1-5	6-10	11-20	21-30	31-40	41-50	51-60
Hemp seed cake	—	0,2 g	0,5 g	0,6 g	1,2 g	1,5 g	2,0 g



RABBITS

Maximum daily doses: for adults — 100 g; for young animals from 1 to 3 months — 5-10 g; from 4 to 6 months — 20-30 g.

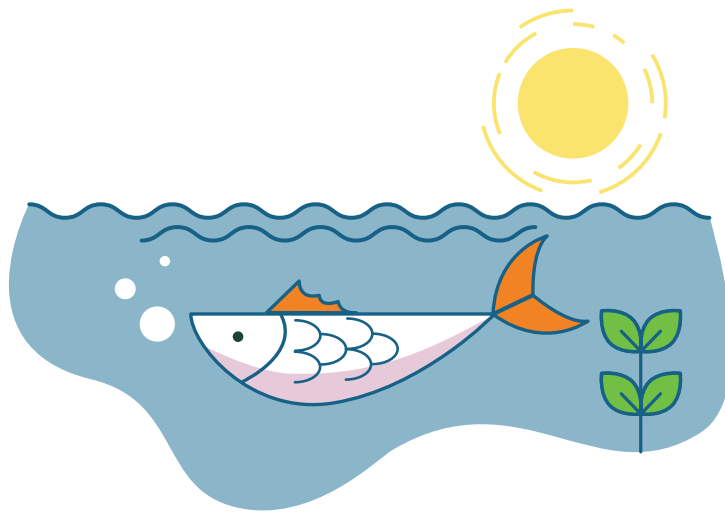
Should be given in crushed or steamed form, mixed with grain fodder or boiled potatoes.

MAXIMUM DAILY DOSES OF HEMP SEED CAKE FOR YOUNG ANIMALS OF DIFFERENT AGE, g PER HEAD

Fodder	Age (months)				
	18-20 days after birth	1-3	3-4	4-5	5 months and older
Hemp seed cake	2 g	5-10 g	10-15 g	15-20 g	20-25 g

MAXIMUM DAILY DOSES OF HEMP CAKE FOR ADULTS, g PER HEAD

Fodder	State of female rabbit		
	Ordinary	Pregnant	Lactating
Hemp seed cake	10 g	20-25 g	30 g



FISH

Hemp seed cake is a promising component of feed supplements for fish, which can be used as an alternative to traditional plant supplements.

It is known that hemp seed cake has attractive properties for fish, which increase feed palatability.

Incorporating hemp seed cake in quantities of 5-15% into feed formulations has a positive effect on the growth performance of fish.

GUIDELINES FOR INCORPORATING HEMP SEED CAKE INTO FEED FORMULATIONS FOR DIFFERENT FISH AGES WITH VARIED FEEDING DIETS

Fish Age	Feeding Diet	% of Fish Weight
Juveniles	Carnivorous	6,6
Yearlings	Carnivorous	7,0
	Herbivorous	4,2
Two-year-olds	Carnivorous	3,3
	Herbivorous	1,9





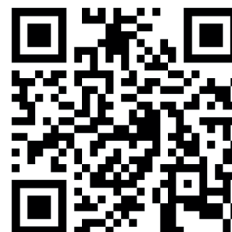
RS SUCCESS AGRO

The transcontinental corporation Industrial Innovation Group presents a project of the RS Success Agro company — the world's first and only global biotechnological industrial agro-complex based on advanced technologies for the cultivation and processing of industrial hemp.



RS Success Agro is the first company in the Republic of Uzbekistan to obtain a license for cultivation, processing, storage, transportation and sale of industrial hemp.

RS Success Agro uses the advanced equipment and international production methods for organization and supervising the process of turning hemp seeds into oil and seed cake.



Learn more about
RS Success Agro



QUALITY CONTROL

The RS Success Agro lab complex consists of four laboratories for a wide range of research:

- Product Quality Diagnostic Laboratory
- Selection Laboratory
- Seed Laboratory
- Agricultural Technologies Laboratory

Animal feed supplement Hemporama pass the full cycle of testing and quality control based on three indicators:

- Physical and chemical composition: acid value, moisture and volatiles, non-fat impurities, phosphorus compounds, total ash, iodine value
- Safety indicator: pesticides, mycotoxins, dioxins, benzopyrene, toxic elements (plumbum, cadmium, mercury, arsenic)
- Fatty acid composition: terpenes



ABOUT INDUSTRIAL HEMP


Hemp species *Cannabis Sativa L.* is an annual plant that does not contain psychotropic substances and is allowed for cultivation and sale.

Organically grown hemp seeds are carefully selected for feed production.



UNIQUE COUNTERFEIT PROTECTION







AUTHENTICITY MARK

ПРИКОРМ И ЛАКОМСТВА
из 100% конопляного жмыха холодного отжима для сельскохозяйственных животных и птиц
Рекомендуемая доза: 1 гр. на 1 кг массы животного
Хранить в темном сухом месте при температуре не выше 20° С и отн. влажности не более 80%
Срок хранения 6 месяцев. Масса нетто: 25 кг

Пищевая ценность:
Сырой протеин – 31 % (в т. ч. Белок – 29,6 %) Жир – 7,7 %
Безазотистые экстрактивные вещества – 17,7 % Клетчатка – 24,7 %






00006UK2DC

ИМПОРТЕР:
ООО «ЛЕОДАР» ул. Летниковская
дом 10, стр.2, 115114, Москва,
Российская Федерация

№ партии:
Дата изготовления:

www.hemporama.com





PRODUCTION PROCESS

Animal feed supplement Hemporama are protected from counterfeiting at a high-tech level. Each bag is marked with an electronic hologram label and can be tracked by the Track&Trace system.

QR code allows you to see all the information about the production process from the start to the finished product.

HEMPORAMA DESIDES WHO IS STRONGER



HEMPORAMA®



FEED SUPPLEMENT FOR THE ANIMAL
hemporama.ch



RS SUCCESS AGRO JV LLC

Leodar str. 1, RCG Pakhtakor,
MCG Uzbekiston tukinchiligi,
Khavast district, Syrdarya region,
Republic of Uzbekistan

www.hemporama.ch